



Spring 2024 Newsletter

Special Announcements

Editor's Note

This editor regrets the tardiness of this SPRING edition which is barely making it out before the summer solstice. For those of the local IES community that don't know, your editor is relocating to South Carolina this summer. The entire process of getting the family ready to roll into new schools, new home, new lives (never mind a full load at work) has gotten the better of your editor. Many of you can relate, but it is not the standard we want to set for the section. The section is undergoing some infrastructure changes over the next couple of months that should streamline the process, but please give the board a little grace in the meantime as well as after to work out the bugs.

On a more personal note, the Lumen & Lunch this Friday, June 21st at Namu in Durham may be the last chance I have to break bread with my Raleigh lighting family, and I hope to see many of you there.

CALL FOR VOLUNTEERS

Reminder: for accounting reasons, the IES has mandated that program years run from January to December rather than the incumbent July to June. Your board is prepared to serve out this extended term, but **NOMINEES ARE NEEDED** on the ballot for 2025, especially for **Treasurer** and **Secretary** as well as **Manager at-large**.

Please reach out to a board member or email iesraleighsection@gmail.com to learn how you can contribute to this vibrant and thriving community of lighting professionals.

Local Events



The summer had been a time of transition for the section under the old calendar. We will take a program pause, but the Education committee is hard at work lining up our

Fall programs to finish out the current term.

June

No LIGHTHOUSE program this month

July

No LIGHTHOUSE program this month

August

No LIGHTHOUSE program this month

Thank you to all our members who attended our live webinars.

As a reminder, you can rewatch any of our recorded webinars on our

[IES Raleigh YouTube Channel](#) & raleigh.ies.org

We want to hear from you! Do you have an idea for a future educational or social event?

Submit your ideas to iesraleighsection@gmail.com

Social Events

Lumen & Lunch/Lagers events are informal, monthly social gatherings. All IES members, guests & those interested in becoming new IES members are invited to join. *Lumen & socials* are great venues for Emerging Professionals to attend for networking, connecting with mentors, career advice, & friendships.

June Lumen & Lunch Social

Date: Friday, June 21st at Namu (Garden*)

Time: 12pm-1pm

Namu

5240 Durham-Chapel Hill Blvd

Durham, NC 27707

[See Section Calendar](#)

JULY SPECIAL SUMMER EVENT - Axe Throwing at Crazy Axe!

Date: Thursday, July 18th

Time: 5-7pm

Crazy Axe

1531 Garner Station Blvd,

Raleigh, NC 27603

August Lumen & Lunch Social

Date: Friday, August 16th at Namu Durham (Garden*)

Time: 12pm-1pm

*In the event of rain or dangerous heat index, the group may relocate to the Beer Hall.

RSVP for June Lumen & Lunch

Membership

Welcome New Member

A special welcome to **ELI CARNAHAN, AUSTIN WILLIAMS, MARK DUSTIN, PATRICK COOKE, and ERIC SVOBODA**

Member Spotlight

This issue's member spotlight is on Nikki-Nicole Miles!



When did you first hear about the IES and what prompted you to join?

I had been living in California and wanted to find a community within my field of expertise that fostered growth and camaraderie.

At what point in your career did you come to understand lighting was the career path for you?

When I achieved degrees in electrical engineering and architecture, I was not quite clear how to marry the two. I had a wonderful mentor who suggested I go to a lighting workshop in Manhattan to figure out how to balance my love for numbers, science, and my undying desire to be an artist. The rest is history.

What is the best thing about the Society? Why do you continue to renew?

We can learn and be inspired by one another. Renewal is simple. Continuing to push our industry and its value is not. We need each other and our voices to

continue to impact the built environment.

Past/Recent Projects

Durham ID

American Tobacco Campus - The Downunder Courtyard

HUB RTP - Horseshoe/The Frontier Pedestrian Streetscape

Boxyard Dog Park

RTP Park Center East Campus Site

Duke University - Fuqua School of Business East Wing

Trinity School - Arts & Engineering Building

Emily Krzyzewski Student Center Addition

JJ Henderson Tower Exterior

Channel House

Cisco RTP8 Innovation Center

Pepsi Headquarters - Winston-Salem

UNC Arbor Renovation

When not serving the advancement of the art and science of lighting, how do you like to spend your free time?

My two pre-teens keep me quite busy. I think their social calendar is more involved than mine. When I do find some free time not chauffeuring them around I love a great movie or performance in the theater, traveling, indulging my sweet tooth with baked goodies, or sipping the best whiskey or tequila I can find. I will always have music playing, so I'm constantly curating a great playlist while navigating through this thing called life.

Troubles with your IES login?

If you have encountered technical difficulties with your credentials for ies.org,

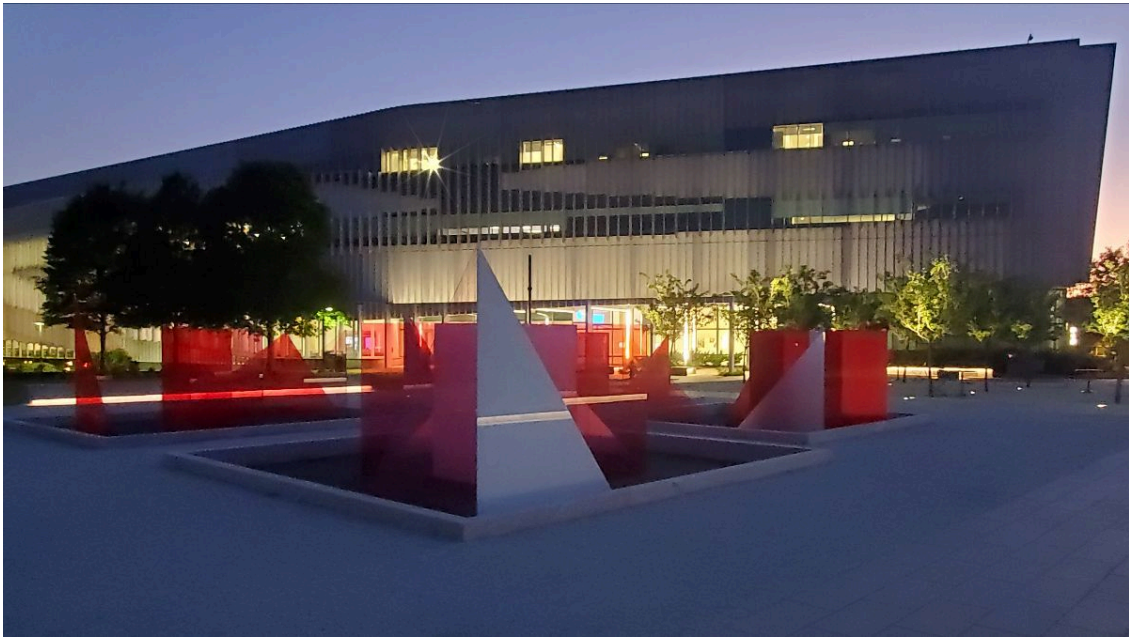
LET THE IES TEAM KNOW!

They can't fix what they don't know, so put in a ticket at requests@ies.org

Project Feature

Centennial Campus Plaza

<https://thinkanddo.ncsu.edu/reds-and-whites/>



Project Description:

NC State contracted landscape architecture, lighting design, and engineering services to construct a suitable setting for a large glass artwork installation commissioned to renowned artist Larry Bell. The team developed a scheme to flank the artwork with a tree Bosque on each side complete with seating within making the entire plaza a destination.

The artist's previous installations are noteworthy for a lack of showcase lighting. Even indoor installations have only a very diffuse backdrop of light with absolutely no electric light on his outdoor glass sculptures being sanctioned by the artist.

Thus, the lighting approach was to illuminate surfaces beyond the artwork to create dynamic and interesting luminous shapes to be experienced via the glass pieces. It can be difficult to discern views *through* the glass from reflections *on* the glass due to the site symmetry.



Name at least one unique challenge associated with this project?

The program of the project was to install a pointy glass sculpture in the middle of a collegiate quad to be accessible 24/7, so there were many non-lighting logistical challenges for this project from the get-go, but then to be the lighting designer for this plum subject discovering the artist is uninterested in lighting the piece or how his work may even be experienced at night threw the entire design team for a loop.

At the end of the day, I consider the project successful because we emphasized what the artist wanted to explore in his work which was to show the interplay of how glass can reflect, refract, and transmit light.



What factors contributed to the success of this project?

The high-profile nature of this project necessitated close coordination between the design team members, between the design team and the owner, between the owner and the artist's team, and every combination thereof. The design team was diligent in every detail coordinating conduit routing with root balls and specialty installation details. Dogged determination pushed this team through material setbacks, glass breakage, and other factors that could have derailed the project.

Design Team:

Owner: NC State University
Lighting Design: Pivotal Lighting Design
Landscape Architect: Design Workshop
Electrical Engineer: Affiliated Engineers, Inc.
All photographs © AEI

We want to hear from you!

Do you have a cool project you would like featured in our next newsletter?

Submit your projects to iesraleighsection@gmail.com or visit <https://raleigh.ies.org/>

Additional Announcements

Standards News

Did you know the Lighting Science Collection is Free for All Members?

Log in at <https://lightinglibrary.ies.org/> as a member, and you get full access to the Lighting Science Collection.

Job Postings

Communications Chair | IES Raleigh Section | Remote...The section is in need of someone to help manage our communications. This would be a part-time, internship, or co-op style position open to anyone with a computer and a willingness to learn! Please email iesraleighsection@gmail.com if interested.

Electrical Designer | Apogee Consulting Group | Cary, NC | [Apogee Consulting Group](#)

Electrical Engineer | Apogee Consulting Group | Cary, NC | [Apogee Consulting Group](#)

Construction Administrator | Apogee Consulting Group | Cary, NC | [Apogee Consulting Group](#)

Cost Estimator | Apogee Consulting Group | Cary, NC | [Apogee Consulting Group](#)

Distributor Sales Representative | LiteSource | Greenville/Wilmington, NC | [Litesource Careers](#)

*Does your company have an open position in North Carolina, South Carolina or Virginia?
Email us at iesraleighsection@gmail.com. Include position / title, company name, and a link to the company job listing.*

Sponsorship

Thank you to our **Sponsors**, whose support allows IES Raleigh Section to provide quality programs for our membership and community.



LITESOURCE

LUMENFOCUS

NLS
LIGHTING



SESCO
LIGHTING



Your logo could be here!

Sponsorship: [info/signup link](#)

Sponsorships are still available for the 2024 program year through 12/31/2024.

Sponsorship for 2025 will be available in Q3.

Email our sponsorship chairperson for more info: Kelly Cox

(sponsorship.iesraleighsection@gmail.com)



Are you good at crafting messaging and creating marketing content? Join our marketing committee today!

Email iesraleighsection@gmail.com



Copyright © 2024 Illuminating Engineering Society Raleigh Section, All rights reserved.

Our mailing address is:

PO Box 16667

Chapel Hill, NC 27516

Want to change how you receive these emails?

You can [update your preferences](#) or [unsubscribe from this list](#).